

## FINISHES



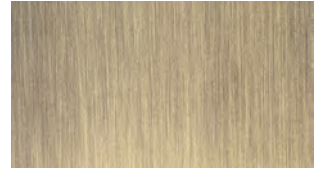
**/1**  
Chrome



**/2**  
Gold



**/3**  
Brushed nickel



**/4**  
Bronze



**/5**  
White



**/6**  
Matt black



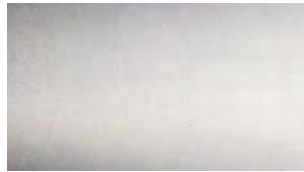
**/7**  
Matt chrome



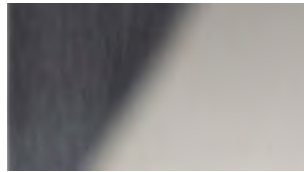
**/8**  
Brushed steel



**/9**  
Machining steel (CNC)



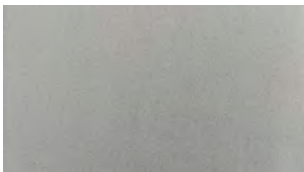
**/10**  
Raw aluminium



**/15**  
Polished steel



**/24**  
Brushed steel effect



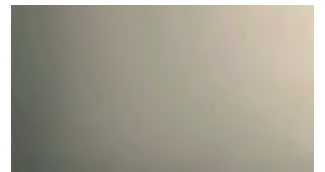
**/45**  
Matt aluminium effect



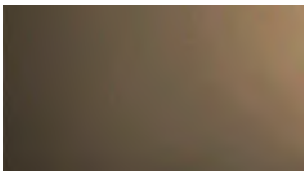
**/56**  
Grey



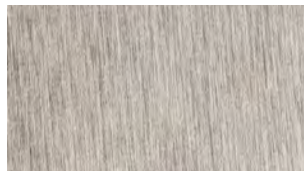
**/65**  
Matt black



**/66**  
Champagne aluminium



**/67**  
Dark brushed bronze aluminium



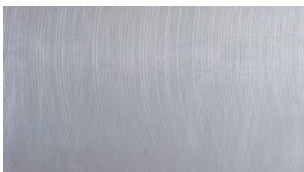
**/83**  
PVD brushed steel



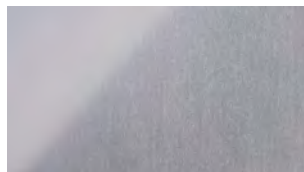
**/88**  
Brushed steel effect aluminium



**/89**  
Galvanised iron



**/90**  
Machining aluminium



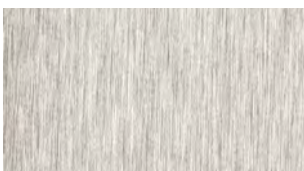
**/91**  
Polished aluminium



**/92**  
Matt nickel



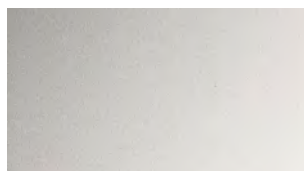
**/93**  
Brass coated



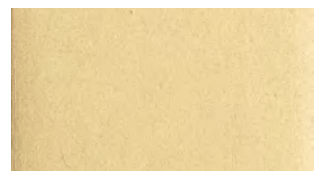
**/94**  
Brushed chrome



**/95**  
Nickel-coated



**/97**  
Matt aluminium



**/99**  
Brushed gold



**/R2**  
RAL9005 matt black



**/R6**  
RAL9016 matt traffic white



**/R13**  
RAL7016 matt anthracite grey



**/RAL**  
RAL9010 polished white